



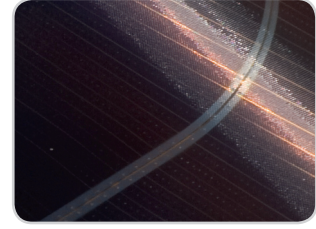
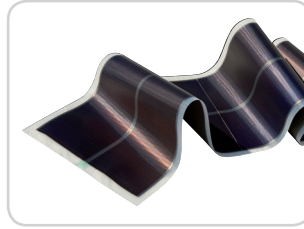
AZUR 2F

Amorphous, flexible thin film solar modules

ETFE encapsulated with 92 Wp nominal power

- »Tandem Junction Structure« (a-Si + a-SiGe) for increased efficiency and power output
- Guaranteed Power Output after 20 years: 80 % of nominal power rating
- Low weight and good power yield per m²
- Minimal power drop at high temperatures due to low temperature coefficient

AZUR 2F



Amorphous, flexible thin film solar modules ETFE encapsulated with 92 Wp nominal power

ELEKTRICAL CHARACTERISTICS

		Standard test conditions: irradiation 1.000 W/m ² ; module temperature 25 °C	
Maximum power ±5 %	P _{max}	92 Wp	
Open circuit voltage	V _{oc}	429 V	
Maximum power voltage	V _{mpp}	319 V	
Maximum power current	I _{mpp}	0,288 A	
Short circuit current	I _{sc}	0,39 A	
Modul efficiency	η	5,4 %	
Maximum system voltage SK II	V _{max}	1.000 V	
Maximum reverse current	I _R	30 mA	

TEMPERATURE COEFFICIENTS

Operating temperature	-20 °C to +90 °C		
Temperature coefficient	α _{I_{sc}}	+0,08 %/ °C	
Temperature coefficient	α _{V_{oc}}	-0,35 %/ °C	
Temperature coefficient	α _{P_{max}}	-0,15 %/ °C	

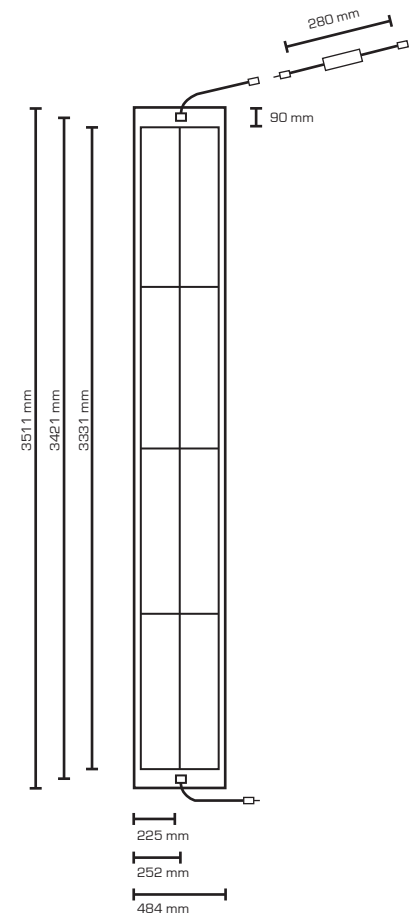
MECHANICAL CHARACTERISTICS

Dimensions (L x W x H)	484 mm (+/- 3) x 3511 mm (+/- 5) x 2 mm (incl. Adhesive film)		
Weight	starting at 1 kg/m ²		
Junction box	MC4 compatible		
Cable type	200 mm length, 2,5 mm ²		
Solar cells	a-Si + a-SiGe		
Polymer laminate material	ETFE		
Bonding technology	Butyl sealant		
Workability	from +5 °C surface temperature		

GURANTEES & CERTIFICATE

Warrenty period	5 years		
Guaranteed Power Output	20 years: 80 % of nominal power rating		
Certificates	VDE, IEC 61730 / IEC 61646, CE + SK II		

DIMENSIONS



Your specialist retailer

For further information:

www.azur-solar.com

AZUR Solar GmbH

In den Bögen 11

D-88299 Leutkirch

Tel. +49 (0) 75 61/98 89-0